

**FOR THE PURPOSE OF SETTING AND ESTABLISHING THE BOUNDARIES OF  
THE CALVERT COUNTY COMMISSIONER ELECTION DISTRICTS  
PURSUANT TO SECTION 1-202 OF ARTICLE 5 OF THE CODE OF PUBLIC LOCAL  
LAWS OF MARYLAND.**

**WHEREAS**, by Section 1-201 of *Article 5 (Calvert County)* of the Code of Public Local Laws of Maryland Calvert County is divided into, and shall remain, three election districts, absent changes to the Public Local Law by the Maryland General Assembly and approved by the Governor;

**WHEREAS**, Section 1-202 of *Article 5 (Calvert County)* of the Code of Public Local Laws of Maryland provides that the Board of County Commissioners for Calvert County, Maryland may establish the boundaries of three (3) County Commissioner Districts in Calvert County;

**WHEREAS**, the federal and State Constitutions and laws generally require that voting districts be of substantially equal population, and that due regard be given to natural boundaries;

**WHEREAS**, the Calvert County Redistricting Committee was created by the Board of County Commissioners on August 31, 2021;

**WHEREAS**, the Calvert County Redistricting Committee is comprised of nine (9) members: One (1) appointed by each of the five (5) County Commissioners; One (1) appointed by the Calvert County Democratic Central Committee; One (1) appointed by the Republican Central Committee; One (1) appointed by the League of Women Voters of Calvert County; and, one (1) appointed by the NAACP Calvert County branch;

**WHEREAS**, the Calvert County Redistricting Committee has considered the changes and shifts in population in Calvert County, Maryland that can be demonstrated through the 2020 Census Data to arrive at Commissioner Election District boundaries that ensure, as closely as can be practicable, geographic, and numeric equality consistent with the U.S. and Maryland Constitutions, and the Voting Rights Act of 1965, (Public Law 89-110), as amended;

**WHEREAS**, upon due notice the Calvert County Redistricting Committee conducted multiple public meetings to consider these changes in population and seven (7) of the nine (9) members have recommended the following District boundaries:

**Between the First and Second Commissioner Districts:**

A line beginning at the confluence of Battle Creek and the Patuxent River, and continuing northeastward with the thread of Battle Creek to the point where it intersects with the thread of an unnamed stream with beginning coordinates of 38.471905°N, 76.593677°W; thence following the thread of said unnamed stream until it intersects with the coordinates of 38.475559°N, 76.582726°W; thence following an imaginary line in a northeast direction to the centerline of Laveille Rd at 38.477195°N, 76.582150°W; thence continuing in an easterly direction with the centerline of Laveille Rd. until it intersects with the centerline of Broomes Island Rd.; thence continuing in a northeast direction with the centerline of Broomes Island Rd. until it intersects with the centerline of Ball Rd.; thence continuing with the centerline of Ball Rd. in an easterly direction, crossing over Maryland Route 4,

until it intersects with the centerline of Calvert Beach Rd.; thence following the centerline of Calvert Beach Rd. in the same easterly direction until it intersects with the centerline of Calvert Ave.; thence continuing in an eastward direction with the centerline of Calvert Ave. to where its extended centerline intersects the Chesapeake Bay at 38.469653°N, 76.478465°W;

Between the Second and Third Commissioner Districts:

A line beginning at the confluence of the Patuxent River and an unnamed stream with beginning coordinates of 38.644451°N, 76.690640°W; thence with the thread of said unnamed stream in an easterly direction until it intersects with the centerline of Scaggs Rd.; thence northward with the centerline of Scaggs Rd. until it intersects with the centerline of Lower Marlboro Rd.; thence along the centerline of Lower Marlboro Rd. in an easterly direction until it intersects with the centerline of Maryland Route 4; thence with the centerline of Route 4 in a southernly direction until it intersects with the centerline of Ponds Woods Rd.; thence in an easterly direction with the centerline of Ponds Wood Rd. until it intersects with the centerline of Bayside Rd.; thence with the centerline of Bayside Rd. in a northernly direction until it intersects with the centerline of Breezy Point Rd.; thence with the centerline of Breezy Point Rd. in an east-southeasterly direction until it terminates within the Breezy Point Beach and Campground and the extended centerline of Breezy Point Rd. meets with the Chesapeake Bay at 38.615867°N, 76.511914°W;

**WHEREAS**, the foregoing descriptions are shown graphically on Exhibit A hereto, which is incorporated herein only for general guidance and does not supersede the foregoing, detailed descriptions; and

**WHEREAS**, the Board of County Commissioners of Calvert County, Maryland have carefully reviewed the recommendation of the Calvert County Redistricting Committee and the comments and concerns of the public offered at their public meetings.

**NOW, THEREFORE, BE IT RESOLVED**, by the Board of County Commissioners of Calvert County, Maryland that, upon consideration of all data and inputs it deems sufficient to create, as closely as practicable, an equal opportunity for all Calvert County citizens to seek election from any of the County's three (3) Commissioner Election Districts, the Board of County Commissioners adopts the County Commissioner Election District boundaries as recommended by the Calvert County Redistricting Committee and set forth above;

**BE IT FURTHER RESOLVED** by the Board of County Commissioners of Calvert County, Maryland that, in the event any portion of this Resolution is found to be unconstitutional, illegal, null or void, it is the intent of the Board of County Commissioners to sever only the invalid portion or provision, and that the remainder of the Resolution shall be enforceable and valid;

**BE IT FURTHER RESOLVED**, by the Board of County Commissioners of Calvert County, Maryland that foregoing recitals are hereby adopted as if written fully herein; and

**BE IT FURTHER RESOLVED**, by the Board of County Commissioners that this Resolution shall be effective upon recordation and publication of a fair summary.

BK0067PG0302

Resolution No. 06-22

Subject: County Commissioner District Boundaries

Page 3 of 3

DONE, this 8<sup>th</sup> day of February, 2022 by the Board of County Commissioners of Calvert County, Maryland sitting in regular session.

Aye: 5  
Nay: 0  
Absent/Abstain: 0

ATTEST:

**BOARD OF COUNTY COMMISSIONERS  
OF CALVERT COUNTY, MARYLAND**

Rachel M. Distel  
Rachel M. Distel, Clerk

Earl F. Hance  
Earl F. Hance, President

Steven R. Weems  
Steven R. Weems, Vice-President

Approved for form and legal  
sufficiency:

Christopher J. Gadway  
Christopher J. Gadway

John B. Norris, III  
John B. Norris, III, County Attorney

Mike Hart  
Mike Hart

Kelly D. McConkey  
Kelly D. McConkey

Received for Record.....2/8....., 2022  
at...3:31.....o'clock.....P...M. Same day  
recorded in Liber KPS No. 67  
Folio...300.....COUNTY COMMISSIONERS  
ORDINANCES AND RESOLUTION.

Garry P. Smith

BK 0067PG0303

Anne Arundel County

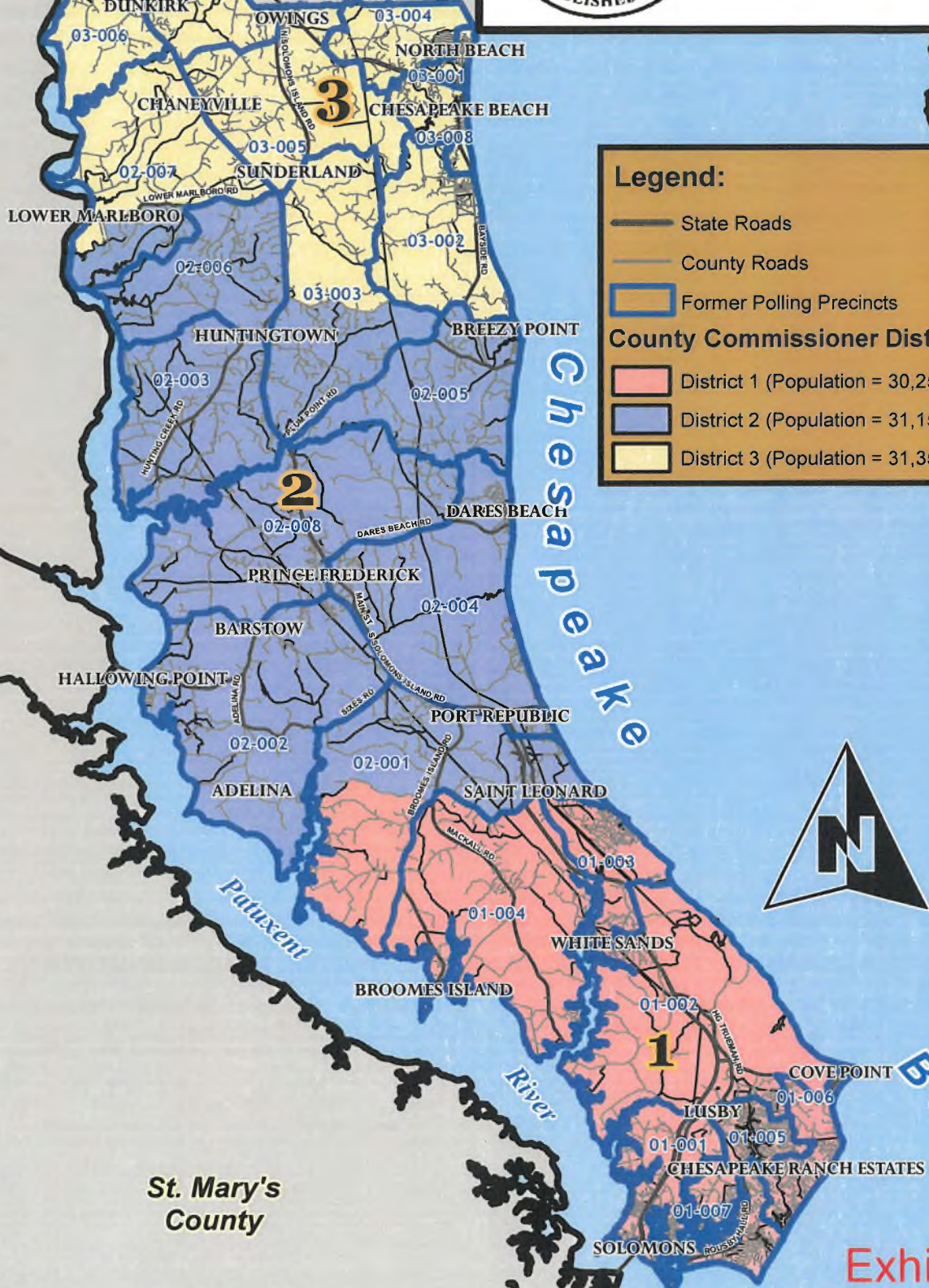


# Recommended District Boundaries

Prince George's County

Charles County

St. Mary's County



**Legend:**

- State Roads
- County Roads
- Former Polling Precincts

**County Commissioner District Lines**

- District 1 (Population = 30,253)
- District 2 (Population = 31,158)
- District 3 (Population = 31,359)



Exhibit A