



DEPARTMENT OF PLANNING & ZONING
INTEROFFICE MEMORANDUM

TO: Board of County Commissioners and Planning Commission
VIA: Julian M. Willis, County Administrator
VIA: Mary Beth Cook, Director
VIA: Carolyn Sunderland, AICP, Deputy Director, Planning
VIA: Jenny Plummer-Welker, AICP, Long Range Planner
FROM: Jesse Clark, Planner I
DATE: March 16, 2022
SUBJECT: Adequate Public Facilities Report for Schools – April 1, 2022

Background:

Adequate public facilities (APF) regulations are a growth management tool that restricts development in areas where facilities are inadequate. Calvert County adopted APF regulations for schools and roads in 1988. The Calvert County Zoning Ordinance states in Article 7-1.05 D.1 that “Schools are adequate when all public elementary and secondary schools which will serve the proposed residential subdivision or residential development will accommodate the pupil yield from that residential subdivision or residential development without exceeding 100 percent of the rated capacity of any of those schools.”

“If the enrollment exceeds 100 percent of rated capacity, the schools may still be deemed adequate if an adopted redistricting results in the enrollment projected by the Department of Planning & Zoning for the next school year not exceeding 100 percent of rated capacity in any of the schools serving the residential subdivision or residential development” (Article 7-1.05 D.2). If facilities are identified as having inadequate capacity, the Department of Planning & Zoning notifies the Planning Commission and the County Commissioners.

The Zoning Ordinance limits the delay of final approval of a residential subdivision or residential development due solely to the lack of adequate school capacity to six years from the date of preliminary approval. The calculations for determining the elementary, middle, and high school APF rated capacities are specified in the Zoning Ordinance. Determination of school adequacy is not required for non-residential subdivisions or age-restricted housing communities. Subdivisions or parcels that meet certain criteria listed in the Zoning Ordinance are exempt from APF requirements for schools (Article 7-1.05. F).

The municipalities of Chesapeake Beach and North Beach have their own planning and zoning authority. The Calvert County APF regulations do not apply within the municipalities. Neither municipality has adopted APF regulations for schools or roads.

Discussion:

Since the fall 2021 report, there were no changes to the open/close status of Calvert County schools.

Two of Calvert County’s public schools continue to be deemed to have inadequate capacity, exceeding 100% of the county’s APF rated capacities for those schools (Attachment 1, Enrollments Compared with APF Rated Capacities, Spring 2022).

The following schools have inadequate APF capacities:

Mt. Harmony Elementary	101.7%
Northern High	102.8%

The attached chart shows the spring 2022 enrollments compared with APF rated capacities for each school. The Calvert County Public School staff provided the enrollment counts and the Career and Technology Academy attendance and confirmed the number of classroom/teaching stations.

According to Article 7-1.05 D of the Zoning Ordinance, Calvert County utilizes a specific methodology in counting elementary school capacity. Pre-K capacity is calculated by the number of classrooms multiplied by 20. Kindergarten uses the same methodology, but the total is multiplied by 22 instead. Grades 1-5 use a multiple of 23 and special education uses a multiple of 10. This methodology does not count non-classroom areas (libraries, media centers, physical education rooms, assembly halls, art rooms, music rooms, etc.).

For enrollment and teaching station data for each school refer to Attachments 2, 3, and 4. A chart showing the calculation for each school's APF rated capacity is shown in Attachment 5. Historic opening and closing of school districts are shown in Attachment 6.

Maps showing elementary, middle, and high school district status and a composite map of all school levels that are over 100% capacity are attached (Attachments 9, 10, 11 and 12). The maps are for illustrative purposes. The Calvert County Public Schools' written descriptions of school district boundaries determine which school districts serve a residential subdivision or residential development. If there is a question regarding which school district serves a parcel, the Calvert County Public Schools makes the final determination.

Elementary Schools

Of the 12 elementary schools, Mt. Harmony Elementary is over capacity at 101.7%. Huntingtown Elementary and Plum Point Elementary are between 90 and 99.9% capacity. The other elementary schools are below 90% capacity.

Middle Schools

Of the six middle schools, none of them are over capacity. Windy Hill Middle is between 90% and 99.9% capacity. The other middle schools are below 90% capacity.

High Schools

Of the four high schools, Northern High is over capacity at 102.8%. The other high schools are below 90% capacity.

Schools at or Approaching 100% Capacity

The number of lots/units that may be recorded is limited based upon the pupil yield by school level and housing type, which are detailed in the Zoning Ordinance.

Student Transfer Analysis

In August 2011, the Board of County Commissioners requested staff include in future reports an analysis of the impact Calvert County Public Schools' policy regarding student transfers has on the APF school capacities. Calvert County Public Schools provided a chart of student transfers for each school for spring of 2022 (Attachment 7).

For spring of 2022, if the net effect of student transfers were not taken into account (meaning if the transfers had not occurred and students remained in the school district in which they live), student transfers would have an impact on whether a school district is to be opened or closed to the recording of residential subdivisions or residential development. If student transfers had not occurred, Mt. Harmony Elementary would be under capacity at 88.1% instead of over capacity at 101.7%. Refer to the Enrollments Compared with APF Rated Capacities, Student Transfers (Attachment 8).

Fiscal Impact:

N/A

Conclusion/Recommendation:

For your information. The next report will be the November 1, 2022 report.

Attachments:

- (1) APF for Schools, Enrollments Compared with APF Rated Capacities, Spring 2022
- (2) Calvert County Public Schools, Enrollment Count, February 2022
- (3) Calvert County Public Schools, Number of Elementary Classrooms/Middle & High Teaching Stations, School Year 2021-2022
- (4) Elementary School Enrollments, Pre-Kindergarten through Grade 5, Spring 2022
- (5) Rated Adequate Public Facilities Capacities for Schools, Spring 2022
- (6) Calvert County APF Regulations, School Districts with Adequate/Inadequate Capacities, Historical Chart, Spring 2022
- (7) Calvert County Public Schools, Student Transfers, Spring 2022
- (8) APF for Schools, Enrollments Compared with APF Rated Capacities, Student Transfers, Spring 2022
- (9) Elementary School Districts over 100% Capacity, Map, Spring 2022
- (10) Middle School Districts over 100% Capacity, Map, Spring 2022
- (11) High School Districts over 100% Capacity, Map, Spring 2022
- (12) School Districts over 100% Capacity, Composite Map, Spring 2022

AICP American Institute of Certified Planners

cc: Calvert County Public Schools, Superintendent and Director of School Construction
Engineering/Survey Firms
County Attorney

CALVERT COUNTY, MARYLAND
ADEQUATE PUBLIC FACILITIES FOR SCHOOLS
ENROLLMENTS COMPARED WITH APF RATED CAPACITIES
Spring 2022

SCHOOL	100% APF RATED CAPACITY Spring 2021 Note 1	2020-2021 SCHOOL YEAR ENROLLMENTS Spring 2021 Note 2	PERCENT OF RATED CAPACITY Spring 2021	100% APF RATED CAPACITY Fall 2021 Note 1	2021-2022 SCHOOL YEAR ENROLLMENTS Fall 2021 Note 2	PERCENT OF RATED CAPACITY Fall 2021	100% APF RATED CAPACITY Spring 2022 Note 1	2021-2022 SCHOOL YEAR ENROLLMENTS Spring 2022 Note 2	PERCENT OF RATED CAPACITY Spring 2022
Elementary Schools									
APPEAL ELEMENTARY	Note 3	Note 3	Note 3	Note 3	Note 3	Note 3	Note 3	Note 3	Note 3
BARSTOW ELEMENTARY	720	574	79.7%	720	638	88.6%	720	633	87.9%
BEACH ELEMENTARY	517	470	90.9%	555	485	87.4%	555	481	86.7%
CALVERT ELEMENTARY	642	478	74.5%	654	502	76.8%	654	503	76.9%
DOWELL ELEMENTARY	674	511	75.8%	674	547	81.2%	674	557	82.6%
HUNTINGTOWN ELEMENTARY	599	453	75.6%	586	500	85.3%	586	528	90.1%
MT. HARMONY ELEMENTARY	604	584	96.7%	604	608	100.7%	604	614	101.7%
MUTUAL ELEMENTARY	540	327	60.6%	554	363	65.5%	554	361	65.2%
PATUXENT ELEMENTARY	Note 3	Note 3	Note 3	Note 3	Note 3	Note 3	Note 3	Note 3	Note 3
PATUXENT APPEAL CAMPUS	1,050	638	60.8%	1,079	671	62.2%	1,079	689	63.9%
PLUM POINT ELEMENTARY	625	550	88.0%	637	581	91.2%	637	594	93.2%
ST. LEONARD ELEMENTARY	651	458	70.4%	664	447	67.3%	664	458	69.0%
SUNDERLAND ELEMENTARY	792	555	70.1%	793	617	77.8%	793	640	80.7%
WINDY HILL ELEMENTARY	749	623	83.2%	735	639	86.9%	735	651	88.6%
Total Elementary	8,163	6,221	76.2%	8,255	6,598	79.9%	8,255	6,709	81.3%
Middle Schools									
CALVERT MIDDLE	827	602	72.8%	827	657	79.4%	827	655	79.2%
MILL CREEK MIDDLE	848	482	56.8%	848	464	54.7%	848	467	55.1%
NORTHERN MIDDLE	678	659	97.2%	678	606	89.4%	678	603	88.9%
PLUM POINT MIDDLE	869	631	72.6%	869	622	71.6%	869	626	72.0%
SOUTHERN MIDDLE	838	460	54.9%	838	443	52.9%	838	440	52.5%
WINDY HILL MIDDLE	817	748	91.6%	817	762	93.3%	817	769	94.1%
Total Middle	4,877	3,582	73.4%	4,877	3,554	72.9%	4,877	3,560	73.0%
High Schools									
CALVERT HIGH	1,349	1,122	83.2%	1,350	1,120	83.0%	1,338	1,100	82.2%
HUNTINGTOWN HIGH	1,615	1,385	85.8%	1,615	1,360	84.2%	1,614	1,352	83.8%
NORTHERN HIGH	1,497	1,482	99.0%	1,488	1,536	103.2%	1,486	1,528	102.8%
PATUXENT HIGH	1,187	1,068	90.0%	1,178	1,056	89.6%	1,171	1,034	88.3%
Total High	5,648	5,057	89.5%	5,631	5,072	90.1%	5,609	5,014	89.4%
County Total	18,688	14,860	79.5%	18,763	15,224	81.1%	18,741	15,283	81.5%

Notes:

1. High school capacities include the lower number of students attending the morning or afternoon session of the Career and Technology Academy at the beginning of the grading period.
2. FTEs for Pre-K and Special Pre-K are included in elementary school enrollments. Kindergarten students attend full day (policy began in 2006-07 school year).
3. As of Fall 2015, Patuxent Elementary and Appeal Elementary schools are reported as one school, Patuxent Appeal Campus. In previous reports, the schools were reported separately, and referred to as "Appeal Elementary" and "Patuxent Elementary."

Based upon information provided by the Calvert County Board of Education, Spring 2022

Enrollment and Career and Technology Academy attendance as of Spring 2022

Prepared by the Department of Planning & Zoning, Spring 2022

**CALVERT COUNTY PUBLIC SCHOOLS
NUMBER OF ELEMENTARY CLASSROOMS AND
MIDDLE & HIGH TEACHING STATIONS
SCHOOL YEAR 2021-2022**

ELEMENTARY SCHOOLS	Pre-K	Kindergarten	Grades 1-5	Special Education	Total
BARSTOW ELEMENTARY	2	4	24	4	34
BEACH ELEMENTARY	1	4	19	1	25
CALVERT ELEMENTARY	1	4	22	4	31
DOWELL ELEMENTARY	1	4	22	6	33
HUNTINGTOWN ELEMENTARY	1	3	20	4	28
MT. HARMONY ELEMENTARY	0	4	22	1	27
MUTUAL ELEMENTARY	0	2	20	5	27
PATUXENT APPEAL CAMPUS*	2	17	25	9	53
PLUM POINT ELEMENTARY	0	4	23	2	29
ST. LEONARD ELEMENTARY	2	4	22	3	31
SUNDERLAND ELEMENTARY	2	3	29	2	36
WINDY HILL ELEMENTARY	1	5	25	3	34

MIDDLE SCHOOLS	Special Education	Grades 6-8	Total
CALVERT MIDDLE	4	37	41
MILL CREEK MIDDLE	4	38	42
NORTHERN MIDDLE	4	30	34
PLUM POINT MIDDLE	4	39	43
SOUTHERN MIDDLE	3	38	41
WINDY HILL MIDDLE	3	37	40

HIGH SCHOOLS	Special Education	Grades 9-12	Total
CALVERT HIGH	2	59	61
HUNTINGTOWN HIGH	2	73	75
NORTHERN HIGH	4	66	70
PATUXENT HIGH	4	52	56

Career and Technology Academy Enrollment for Fall 2021**	A.M.	P.M.	Split	Total
CALVERT HIGH	84	64	7	155
HUNTINGTOWN HIGH	42	80		122
NORTHERN HIGH	65	43	4	112
PATUXENT HIGH	41	26	5	72
Total	232	213	16	461

* As of Fall 2015, Patuxent Elementary and Appeal Elementary schools are reported as one school, Patuxent Appeal Campus. In previous reports, the schools were reported separately, and referred to as "Appeal Elementary" and "Patuxent Elementary."

Source: Calvert County Public Schools
Classroom/Teaching Station Data, Spring 2022
Career Center Enrollment, Spring 2022
Prepared by the Department of Planning & Zoning, Spring 2022

**CALVERT COUNTY, MARYLAND
ELEMENTARY SCHOOL ENROLLMENTS
PRE-KINDERGARTEN THROUGH GRADE 5
Spring 2022**

School	Pre-K	Special Pre-K	Total Pre-K	FTE Pre-K	Round up Pre-K	Enrollment K to 5	Enrollment Pre-K to 5
BARSTOW ELEMENTARY	47	10	57	28.5	29	604	633
BEACH ELEMENTARY	28	0	28	14	14	467	481
CALVERT ELEMENTARY	35	0	35	17.5	18	485	503
DOWELL ELEMENTARY	29	0	29	14.5	15	542	557
HUNTINGTOWN ELEMENTARY	48	18	66	33	33	495	528
MT. HARMONY ELEMENTARY	0	0	0	0	0	614	614
MUTUAL ELEMENTARY	0	0	0	0	0	361	361
PATUXENT APPEAL CAMPUS*	85	25	110	55	55	634	689
PLUM POINT ELEMENTARY	0	0	0	0	0	594	594
ST. LEONARD ELEMENTARY	40	8	48	24	24	434	458
SUNDERLAND ELEMENTARY	64	10	74	37	37	603	640
WINDY HILL ELEMENTARY	19	0	19	9.5	10	641	651
TOTAL	395	71	466	233	235	6,474	6,709

FTE = Full Time Equivalent

** As of Fall 2015, Patuxent Elementary and Appeal Elementary schools are reported as one school, Patuxent Appeal Campus. In previous reports, the schools were reported separately, and referred to as "Appeal Elementary" and "Patuxent Elementary."*

Enrollment provided by the Calvert County Public Schools, Spring 2022

Prepared by the Department of Planning & Zoning, Spring 2022

**CALVERT COUNTY, MARYLAND
RATED ADEQUATE PUBLIC FACILITIES CAPACITIES FOR SCHOOLS
Spring 2022**

SCHOOL	Number of Pre - K Rooms	Number of Pre - K per Room	Capacity for Pre - K	Number of Kindergarten Rooms	Number of Kindergarteners per Room	Capacity for Kindergarten	Number of Grade 1-5 Rooms	Number of 1-5 Graders per Room	Capacity for Grades 1-5	Number of Special Education Rooms / Teaching Stations	Number of Special Ed. Students per Room / Teaching Stations	Capacity for Special Ed. Rooms / Teaching Stations	Total No. of Teaching Stations (non SPED) Mid. & High	No. of Students per Teaching Station (non SPED) Mid. & High	Capacity for non SPED Teaching Stations Mid. & High	Capacity for non SPED Teaching Stations Mid. & High Rounded up	Capacity for High Schools SPED & non SPED	Additional Capacity for Career Center Attendance**	Total No. of Classrooms/ Teaching Stations	APF RATED CAPACITY Adopted County Formula
ELEMENTARY SCHOOLS																				
APPEAL ELEMENTARY*	-	-	-	-	-	-	-	-	-	-	-	-	-	-	-	-	-	-	-	-
BARSTOW ELEMENTARY	2	20	40	4	22	88	24	23	552	4	10	40							34	720
BEACH ELEMENTARY	1	20	20	4	22	88	19	23	437	1	10	10							25	555
CALVERT ELEMENTARY	1	20	20	4	22	88	22	23	506	4	10	40							31	654
DOWELL ELEMENTARY	1	20	20	4	22	88	22	23	506	6	10	60							33	674
HUNTINGTOWN ELEMENTARY	1	20	20	3	22	66	20	23	460	4	10	40							28	586
MT. HARMONY ELEMENTARY	0	20	0	4	22	88	22	23	506	1	10	10							27	604
MUTUAL ELEMENTARY	0	20	0	2	22	44	20	23	460	5	10	50							27	554
PATUXENT ELEMENTARY*	-	-	-	-	-	-	-	-	-	-	-	-	-	-	-	-	-	-	-	-
PATUXENT APPEAL CAMPUS*	2	20	40	17	22	374	25	23	575	9	10	90							53	1079
PLUM POINT ELEMENTARY	0	20	0	4	22	88	23	23	529	2	10	20							29	637
ST. LEONARD ELEMENTARY	2	20	40	4	22	88	22	23	506	3	10	30							31	664
SUNDERLAND ELEMENTARY	2	20	40	3	22	66	29	23	667	2	10	20							36	793
WINDY HILL ELEMENTARY	1	20	20	5	22	110	25	23	575	3	10	30							34	735
Total Elementary	13		260	58		1,276	273		6,279	44		440							388	8,255
MIDDLE SCHOOLS																				
CALVERT MIDDLE										4	10	40	37	25 * 85%	786.25	787			41	827
MILL CREEK MIDDLE										4	10	40	38	25 * 85%	807.5	808			42	848
NORTHERN MIDDLE										4	10	40	30	25 * 85%	637.5	638			34	678
PLUM POINT MIDDLE										4	10	40	39	25 * 85%	828.75	829			43	869
SOUTHERN MIDDLE										3	10	30	38	25 * 85%	807.5	808			41	838
WINDY HILL MIDDLE										3	10	30	37	25 * 85%	786.25	787			40	817
Total Middle												220	219		4653.75	4654			241	4,877
HIGH SCHOOLS																				
CALVERT HIGH										2	10	20	59	25 * 85%	1253.75	1,254	1,274	64	61	1,338
HUNTINGTOWN HIGH										2	10	20	73	25 * 85%	1551.25	1,552	1,572	42	75	1,614
NORTHERN HIGH***										4	10	40	66	25 * 85%	1402.5	1,403	1,443	43	70	1,486
PATUXENT HIGH										4	10	40	52	25 * 85%	1105	1,105	1,145	26	56	1,171
Total High												120	250		5312.5	5313	5,434	175	262	5,609
County Total																				18,741

* As of Fall 2015, Patuxent Elementary and Appeal Elementary schools are reported as one school, Patuxent Appeal Campus. In previous reports, the schools were reported separately, and referred to as "Appeal Elementary" and "Patuxent Elementary."

** The lower number of students attending the morning or afternoon session of the Career Center as of Spring 2022

*** The number of teaching stations for Northern High increased from 65 to 66 for Fall 2020

Number of classrooms/teaching stations and Career Center attendance provided by the Board of Education, Spring 2022

Prepared by the Department of Planning & Zoning, Spring 2022

**ADEQUATE PUBLIC FACILITIES REGULATIONS
SCHOOL DISTRICTS WITH ADEQUATE/INADEQUATE CAPACITIES
HISTORICAL CHART
Spring 2022**

	Spring 2011	Fall 2011	Spring 2012	Fall 2012	Spring 2013	Fall 2013	Spring 2014	Fall 2014 Note A	Spring 2015	Fall 2015 Note B	Spring 2016 Note B	Fall 2016 Note B	Spring 2017 Note B	Fall 2017 Note B	Spring 2018 Note B	Fall 2018 Note B	Spring 2019 Note B	Fall 2019 Note B	Spring 2020 Note B	Fall 2020 Note B	Spring 2021 Note B	Fall 2021 Note B	Spring 2022 Note B	
APPEAL ELEMENTARY (Note B)										-	-	-	-	-	-	-	-	-	-	-		-	-	
BARSTOW ELEMENTARY (Fall 2009)																								
BEACH ELEMENTARY																								
CALVERT ELEMENTARY																								
DOWELL ELEMENTARY (Fall 1999)																								
HUNTINGTOWN ELEMENTARY																								
MT. HARMONY ELEMENTARY																								
MUTUAL ELEMENTARY																								
PATUXENT ELEMENTARY (Fall 1992) (Note B)										-	-	-	-	-	-	-	-	-	-	-	-	-	-	
PATUXENT APPEAL CAMPUS (Note B)	-	-	-	-	-	-	-	-	-															
PLUM POINT ELEMENTARY																								
ST. LEONARD ELEMENTARY (Fall 1996)																								
SUNDERLAND ELEMENTARY																								
WINDY HILL ELEMENTARY (Fall 1996)																								
CALVERT MIDDLE																								
MILL CREEK MIDDLE (Late Fall 2000)																								
NORTHERN MIDDLE																								
PLUM POINT MIDDLE																								
SOUTHERN MIDDLE (expanded Fall 1996)																								
WINDY HILL MIDDLE (Fall 1998)																								
CALVERT HIGH																								
HUNTINGTOWN HIGH (Fall 2004)																								
NORTHERN HIGH																								
PATUXENT HIGH (Spring 1996)																								

Key: [REDACTED] School district exceeding 100% capacity. School district closed to recording of subdivisions/residential site development plans.
[REDACTED] School district at or below 100% capacity. Number of lots/units that may be recorded may be limited. Refer to the Zoning Ordinance for details.
 - See Note B

Notes:

- A: The elementary school boundaries for Beach, Plum Point, and Windy Hill elementary schools took effect in March 2014. New boundaries are included in the Fall 2014 APF Report.
- B: As of Fall 2015, Patuxent Elementary and Appeal Elementary schools are reported as one school, Patuxent Appeal Campus. In previous reports, the schools were reported separately and referred to as "Appeal Elementary" and "Patuxent Elementary."

Prepared by the Department of Planning & Zoning, Spring 2022

Date: 03/03/2022

Calvert County Public Schools

Page: 1

Time: 7:05 AM

Student Transfers for the 2022SY as of 3-3-2022

Building	Year	# Approved Transfers	Net of Approved Transfers	Grade	# Approved In	# Approved Out	# Pending In	# Pending Out	Net	Current #	# w/Pending Transfers
Barstow Elementary School	2022	126	-54	01	6	13	0	0	-7	93	93
				02	4	29	0	0	-25	105	105
				03	7	7	0	0	0	115	115
				04	3	19	0	0	-16	84	84
				05	9	11	0	0	-2	114	114
				91	7	11	0	0	-4	94	94
Beach Elementary School	2022	88	-48	01	1	13	0	0	-12	64	64
				02	1	13	0	0	-12	71	71
				03	4	10	0	0	-6	80	80
				04	7	13	0	0	-6	84	84
				05	2	11	0	0	-9	88	88
				91	5	8	0	0	-3	80	80
Calvert Elementary School	2022	137	-29	01	8	16	0	0	-8	90	90
				02	8	15	0	0	-7	79	79
				03	4	12	0	0	-8	73	73
				04	9	14	0	0	-5	80	80
				05	12	13	0	0	-1	90	90
				91	13	13	0	0	0	73	73
Calvert High School	2022	73	-6	09	7	10	1	0	-2	294	295
				10	10	10	0	0	0	273	273
				11	2	8	0	0	-6	271	271
				12	14	12	0	0	2	261	261
Calvert Middle School	2022	61	27	06	12	4	0	0	8	213	213
				07	15	6	0	0	9	218	218
				08	17	7	0	0	10	224	224
Dowell Elementary School	2022	89	19	01	8	3	0	0	5	94	94
				02	13	2	0	0	11	102	102
				03	6	8	0	0	-2	90	90
				04	8	4	0	0	4	90	90
				05	7	7	0	0	0	87	87
				91	12	11	0	0	1	82	82
Huntingtown Elementary School	2022	117	70	01	15	4	0	0	11	75	75
				02	22	4	1	0	19	79	80
				03	13	2	0	0	11	80	80
				04	17	4	0	0	13	102	102
				05	9	7	0	0	2	85	85
				91	17	3	0	0	14	74	74
Huntingtown High School	2022	62	-14	09	3	5	0	0	-2	353	353
				10	4	10	0	0	-6	326	326
				11	5	5	0	0	0	331	331

Student Transfers for the 2022SY as of 3-3-2022

Building	Year	# Approved Transfers	Net of Approved Transfers	Grade	# Approved In	# Approved Out	# Pending In	# Pending Out	Net	Current #	# w/Pending Transfers
Huntingtown High School	2022	62	-14	12	12	18	0	0	-6	341	341
Mill Creek Middle School	2022	26	2	06	3	2	0	0	1	137	137
				07	5	1	0	0	4	155	155
				08	6	9	0	0	-3	175	175
Mt Harmony Elementary School	2022	116	82	01	16	4	0	0	12	96	96
				02	21	3	0	0	18	98	98
				03	19	5	0	0	14	109	109
				04	12	2	0	0	10	97	97
				05	14	2	0	0	12	125	125
				91	17	1	0	0	16	90	90
Mutual Elementary School	2022	83	17	01	7	5	0	0	2	59	59
				02	14	8	0	0	6	64	64
				03	7	10	0	0	-3	71	71
				04	5	3	0	0	2	46	46
				05	11	2	0	0	9	70	70
				91	6	5	0	0	1	51	51
Northern High School	2022	38	9	09	2	0	0	1	1	426	425
				10	6	4	0	0	2	366	366
				11	5	3	0	0	2	345	345
				12	11	7	0	0	4	390	390
Northern Middle School	2022	50	24	06	11	4	0	0	7	186	186
				07	8	7	0	0	1	215	215
				08	18	1	0	0	17	201	201
Patuxent Appeal Campus	2022	112	-70	01	2	11	0	0	-9	97	97
				02	2	21	0	0	-19	99	99
				03	6	12	0	0	-6	120	120
				04	1	10	0	0	-9	100	100
				05	5	17	0	0	-12	130	130
				91	5	20	0	0	-15	88	88
Patuxent High School	2022	24	12	09	6	2	0	0	4	275	275
				10	6	2	0	0	4	290	290
				11	4	0	0	0	4	242	242
				12	2	2	0	0	0	228	228
Plum Point Elementary School	2022	99	-2	01	8	9	0	0	-1	115	115
				02	9	9	0	1	-1	93	92
				03	7	10	0	0	-3	85	85
				04	10	7	0	0	3	109	109
				05	9	6	0	0	3	104	104
				91	6	9	0	0	-3	88	88
Plum Point Middle	2022	45	1	06	5	6	0	0	-1	203	203

Student Transfers for the 2022SY as of 3-3-2022

Building	Year	# Approved Transfers	Net of Approved Transfers	Grade	# Approved In	# Approved Out	# Pending In	# Pending Out	Net	Current #	# w/Pending Transfers
School	2022	45	1	07	10	6	0	0	4	188	188
				08	8	10	0	0	-2	234	234
Southern Middle School	2022	58	-40	06	2	12	0	0	-10	137	137
				07	1	20	0	0	-19	150	150
				08	6	17	0	0	-11	153	153
St. Leonard Elementary School	2022	83	-21	01	4	8	0	0	-4	50	50
				02	8	11	0	0	-3	64	64
				03	4	7	0	0	-3	77	77
				04	6	9	0	0	-3	75	75
				05	4	8	0	0	-4	88	88
				91	5	9	0	0	-4	80	80
Sunderland Elementary School	2022	126	-4	01	11	6	0	0	5	101	101
				02	13	7	0	0	6	109	109
				03	10	14	0	0	-4	98	98
				04	12	12	0	0	0	103	103
				05	8	13	0	0	-5	107	107
				91	7	13	0	0	-6	83	83
Windy Hill Elementary School	2022	128	40	01	13	7	0	0	6	96	96
				02	14	7	0	0	7	112	112
				03	17	7	0	0	10	109	109
				04	15	8	0	0	7	103	103
				05	13	6	0	0	7	110	110
				91	12	9	0	0	3	112	112
Windy Hill Middle School	2022	51	-15	06	5	10	0	0	-5	268	268
				07	9	8	0	0	1	229	229
				08	4	15	0	0	-11	271	271

CALVERT COUNTY, MARYLAND
ADEQUATE PUBLIC FACILITIES FOR SCHOOLS
ENROLLMENTS COMPARED WITH APF RATED CAPACITIES
STUDENT TRANSFERS
Spring 2022

SCHOOL	100% APF RATED CAPACITY Spring 2022 Note 1	2021-2022 SCHOOL YEAR ENROLLMENTS Spring 2022 Note 2	PERCENT OF RATED CAPACITY Spring 2022	NET STUDENT TRANSFERS	ENROLLMENT WITH NET STUDENT TRANSFERS	PERCENT OF RATED CAPACITY (DISTRICT)
ELEMENTARY SCHOOLS						
APPEAL ELEMENTARY	Note 3	Note 3	Note 3	Note 3	Note 3	Note 3
BARSTOW ELEMENTARY	720	633	87.9%	-54	687	95.4%
BEACH ELEMENTARY	555	481	86.7%	-48	529	95.3%
CALVERT ELEMENTARY	654	503	76.9%	-29	532	81.3%
DOWELL ELEMENTARY	674	557	82.6%	19	538	79.8%
HUNTINGTOWN ELEMENTARY	586	528	90.1%	70	458	78.2%
MT. HARMONY ELEMENTARY	604	614	101.7%	82	532	88.1%
MUTUAL ELEMENTARY	554	361	65.2%	17	344	62.1%
PATUXENT ELEMENTARY	Note 3	Note 3	Note 3	Note 3	Note 3	Note 3
PATUXENT APPEAL CAMPUS (Note 3)	1,079	689	63.9%	-70	759	70.3%
PLUM POINT ELEMENTARY	637	594	93.2%	-2	596	93.6%
ST. LEONARD ELEMENTARY	664	458	69.0%	-21	479	72.1%
SUNDERLAND ELEMENTARY	793	640	80.7%	-4	644	81.2%
WINDY HILL ELEMENTARY	735	651	88.6%	40	611	83.1%
Total Elementary	8,255	6,709	81.3%	0	6,709	81.3%
MIDDLE SCHOOLS						
CALVERT MIDDLE	827	655	79.2%	27	628	75.9%
MILL CREEK MIDDLE	848	467	55.1%	2	465	54.8%
NORTHERN MIDDLE	678	603	88.9%	24	579	85.4%
PLUM POINT MIDDLE	869	626	72.0%	1	625	71.9%
SOUTHERN MIDDLE	838	440	52.5%	-40	480	57.3%
WINDY HILL MIDDLE	817	769	94.1%	-15	784	96.0%
Total Middle	4,877	3,560	73.0%	-1	3,561	73.0%
HIGH SCHOOLS						
CALVERT HIGH	1,338	1,100	82.2%	-6	1,106	82.7%
HUNTINGTOWN HIGH	1,614	1,352	83.8%	-14	1,366	84.6%
NORTHERN HIGH	1,486	1,528	102.8%	9	1,519	102.2%
PATUXENT HIGH	1,171	1,034	88.3%	12	1,022	87.3%
Total High	5,609	5,014	89.4%	1	5,013	89.4%
County Total	18,741	15,283	81.5%	0	15,283	81.5%

Notes:

- High school capacities include the lower number of students attending the morning or afternoon session of the Career and Technology Academy at the beginning of the grading period.
- Full Time Equivalents (FTEs) for Pre-K and Special Pre-K are included in elementary school enrollments. Kindergarten students attend full day (policy began in 2006-07 school year).
- As of Fall 2015, Patuxent Elementary and Appeal Elementary schools are reported as one school, Patuxent Appeal Campus. In previous reports, the schools were reported separately and referred to as "Appeal Elementary" and "Patuxent Elementary."

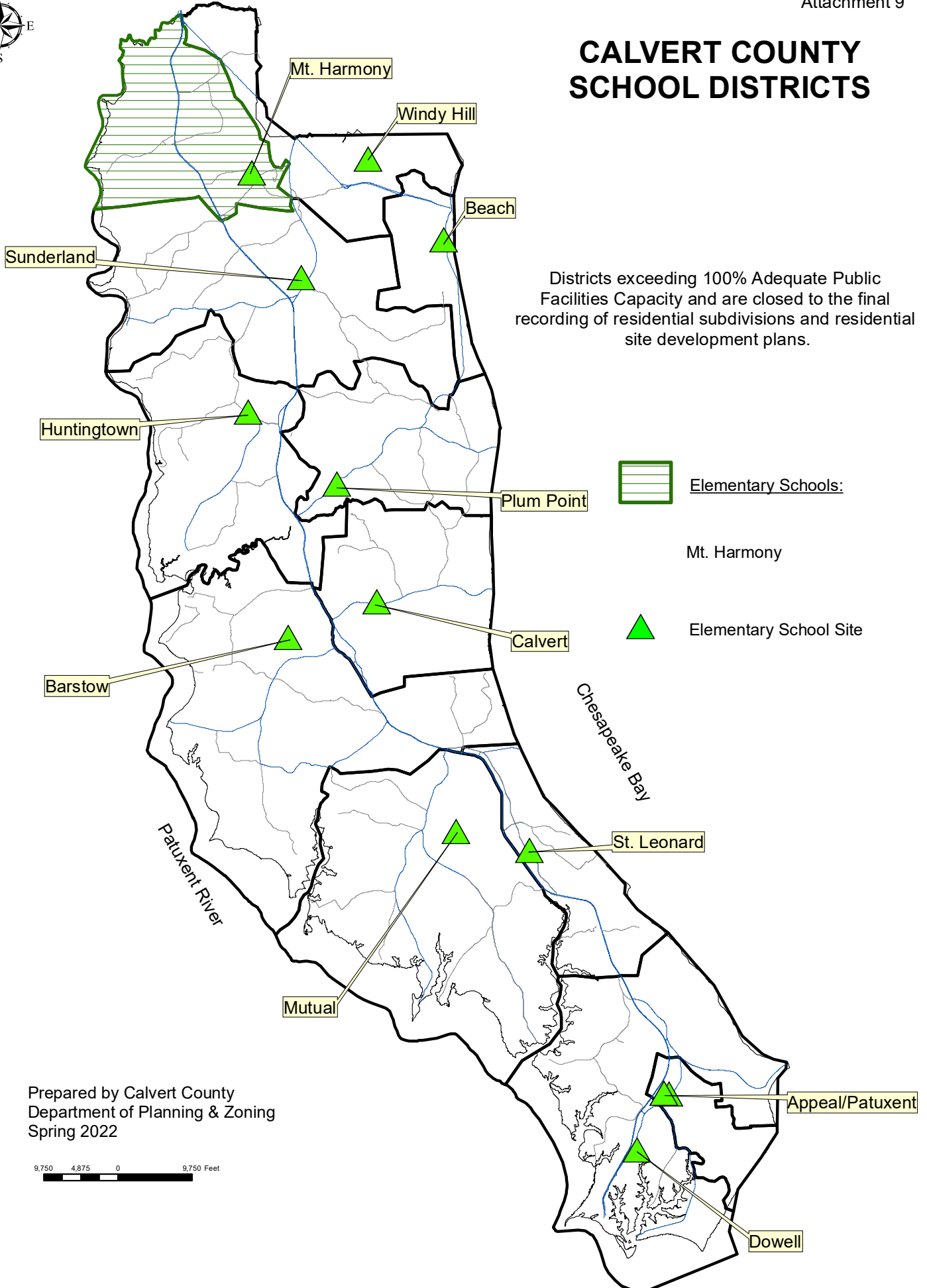
Based upon information provided by the Calvert County Public Schools, Spring 2022

Enrollment and Career and Technology Academy attendance as of Spring 2022

Prepared by the Department of Planning & Zoning, Spring 2022

CALVERT COUNTY SCHOOL DISTRICTS

Districts exceeding 100% Adequate Public Facilities Capacity and are closed to the final recording of residential subdivisions and residential site development plans.

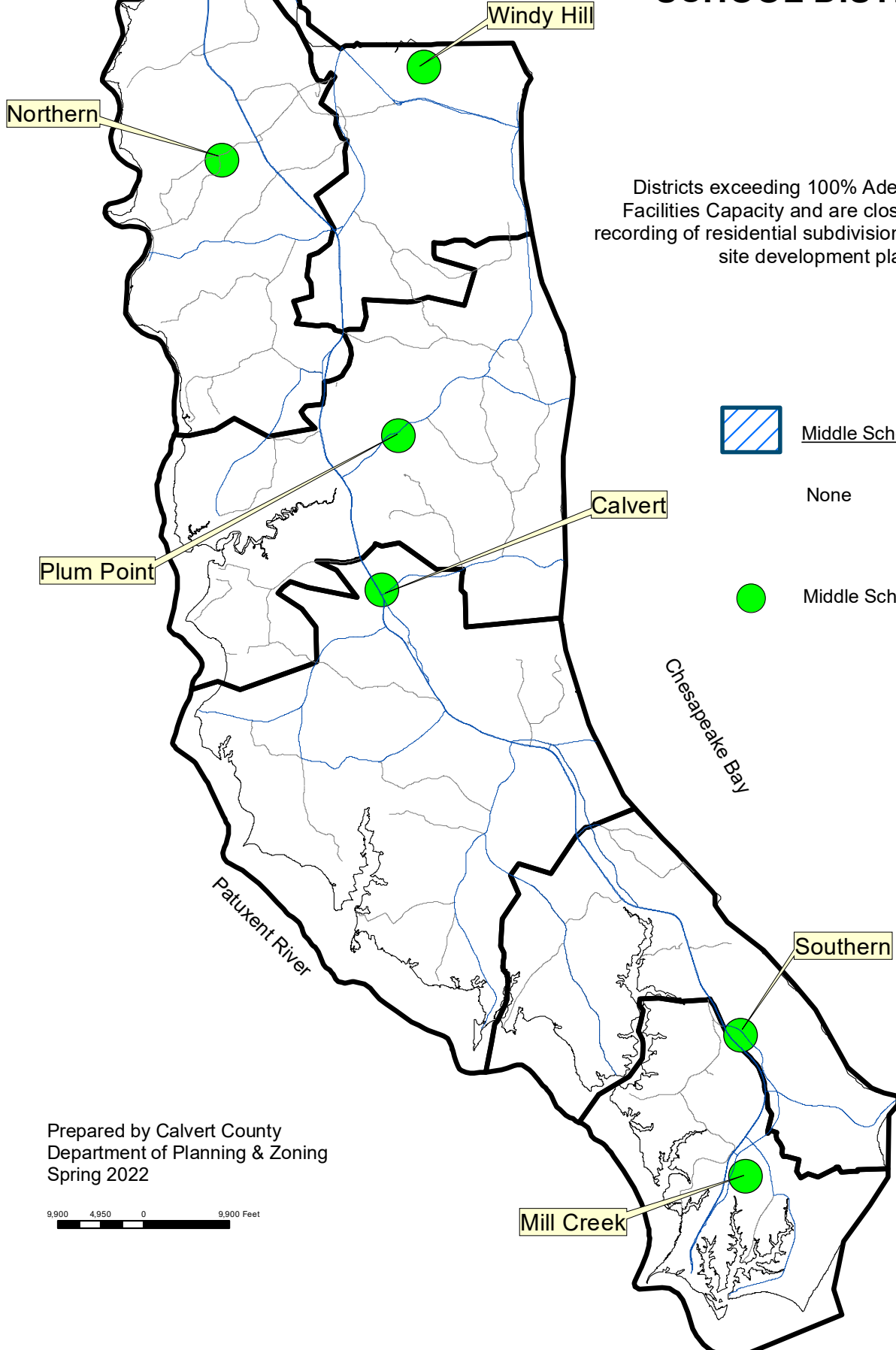


Prepared by Calvert County
Department of Planning & Zoning
Spring 2022

9,750 4,875 0 9,750 Feet

CALVERT COUNTY SCHOOL DISTRICTS

Districts exceeding 100% Adequate Public Facilities Capacity and are closed to the final recording of residential subdivisions and residential site development plans.



Prepared by Calvert County
Department of Planning & Zoning
Spring 2022

9,900 4,950 0 9,900 Feet

CALVERT COUNTY SCHOOL DISTRICTS

Districts exceeding 100% Adequate Public Facilities Capacity and are closed to the final recording of residential subdivisions and residential site development plans.



High Schools:

Northern High School



High School Sites



NORTHERN HS

HUNTINGTOWN HS

CALVERT HS

PATUXENT HS

Patuxent River

Chesapeake Bay

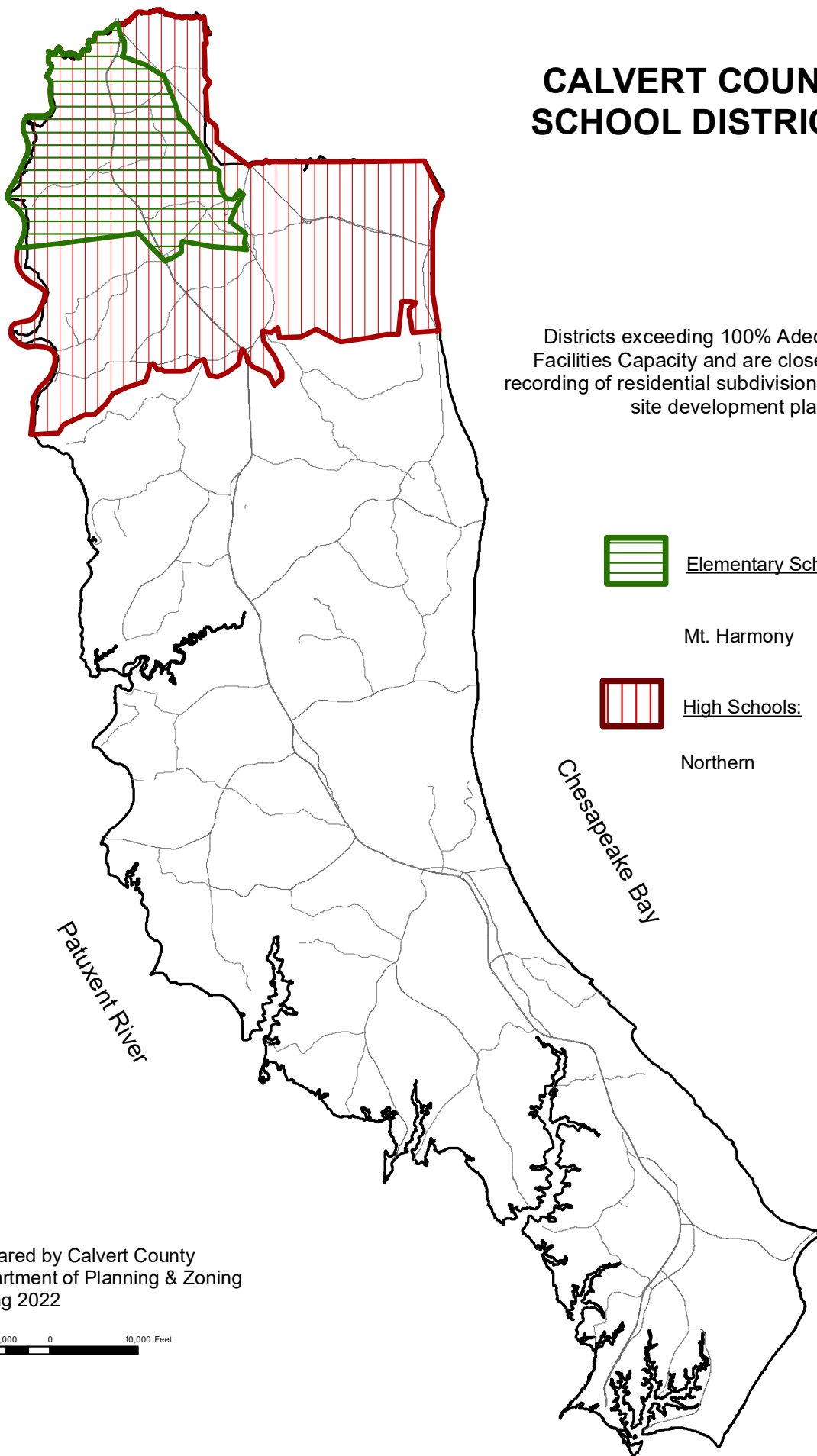
Prepared by Calvert County
Department of Planning & Zoning
Spring 2022


9,900 4,950 0 9,900 Feet




CALVERT COUNTY SCHOOL DISTRICTS

Districts exceeding 100% Adequate Public Facilities Capacity and are closed to the final recording of residential subdivisions and residential site development plans.



 Elementary Schools:

Mt. Harmony

 High Schools:

Northern

Prepared by Calvert County
Department of Planning & Zoning
Spring 2022

10,000 5,000 0 10,000 Feet